

Full Score

Julie McCarthy

Eclipse

For Horn, Violin, Cello

Eclipse

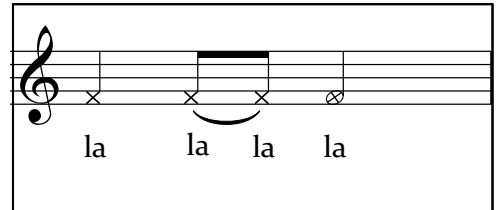
For Horn, Violin, Cello

Julie McCarthy

Recently I saw the eclipse from the moon and the earth. I wanted to somehow convey that feeling of being in the presence of this mystical, natural and dark beauty. Each pitch material was carefully chosen based upon the distance between the earth the moon and the moon and the sun. Various themes take over the composition as the music diverges into solos and duos of each instrument. Each various theme underlies the darkness of the blood moon and the effect it has on those watching this fantastic event.

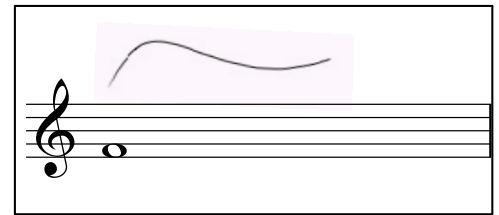
(Horn) Sing into Instrument:

Text sung into instrument on vowel la. When La's are slurred, sing legato.
For the passage indicated, please memorize it. It is very short. It only comes up once in m. 12
If sung by a man, the passage can be transposed down an octave.



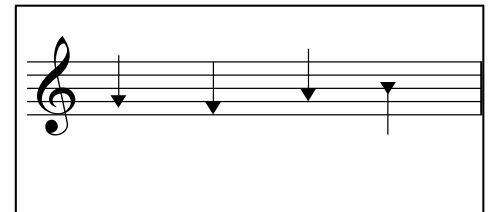
(Horn) Note/Lip Bends:

Are indicated by the graphics above the lower the graphic indicated is where the note will bend. In all cases, the note will bend down until it is no longer audible. Similarly to a sigh. This indication would also dynamically *crecendo* and *decrecendo* to niente (nothing.)



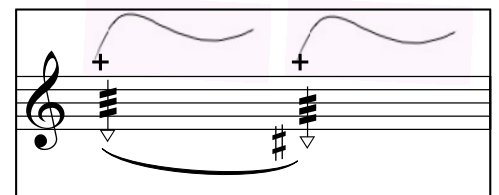
(Horn) Half Valve:

Are indicated by the "triangle notes". This is a 21st century technique that hopefully isn't too difficult to master. Press all three Valves on F side of horn halfway down to go inbetween the overtone series? Should shoud stuffy with little core sound.



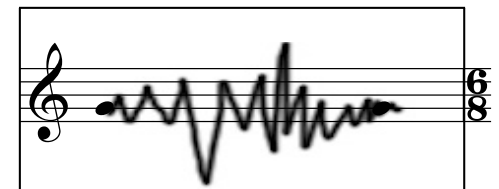
(Horn) Stopped Notes/Flutter Toungeing/Stopped/Lip Bend:

Stopped are indicated by the "plus sign" above the staff. On stopped notes, place your hand in the horn to create a stopped note. Additionally, you also must flutter tounge. Furthermore, also do lip bend techniques to accentuate this dramatic effect. This effect is featured in m.28



Graphic Glissando:

Glissando on the indicated string as exaggerated as notated. The starting and ending pitch are already chosen.



Eclipse

Horn, Violin, Cello

Julie McCarthy

♩ = 69 Mystical

1 A

♩ = 69

6

9 B

sol point as wished or follow indications

similie...

13

vibrato faster than previously indicated

mf < f

17

sul point

ord.

sul point

3

21

mf < f < fff

25

* Glissando as exaggerated as notated on (Sul D)

* Glissando as exaggerated as IV notated

5

29

sfz *sfz* *pp* possible *pp*

mf *f* *siempre...*

f *siempre...* 3

34

mf *fp* *f*

mf *f < ff* 3

38

Vln. *f* *mf* *mf*

Vc. *mf* *mf*

42

Vln. *mf* *mp* *mp* *pp*

Vc. *mf* *f*

46

Vln. *pp*

Vc. *mf* *f* *mf* *f* *mf* *f*

49 7

rit.

Vln.

Vc.

mp *mp* *f* *mp*

mf *<f* *mp*

3

55 Fine.

Vln.

Vc.

mf *p* *mf* *f*

mf *p* *mf* *mf < f*

mf *p* *mf* *mf < f*

pizz. *arco*